

# TJ d'Evry



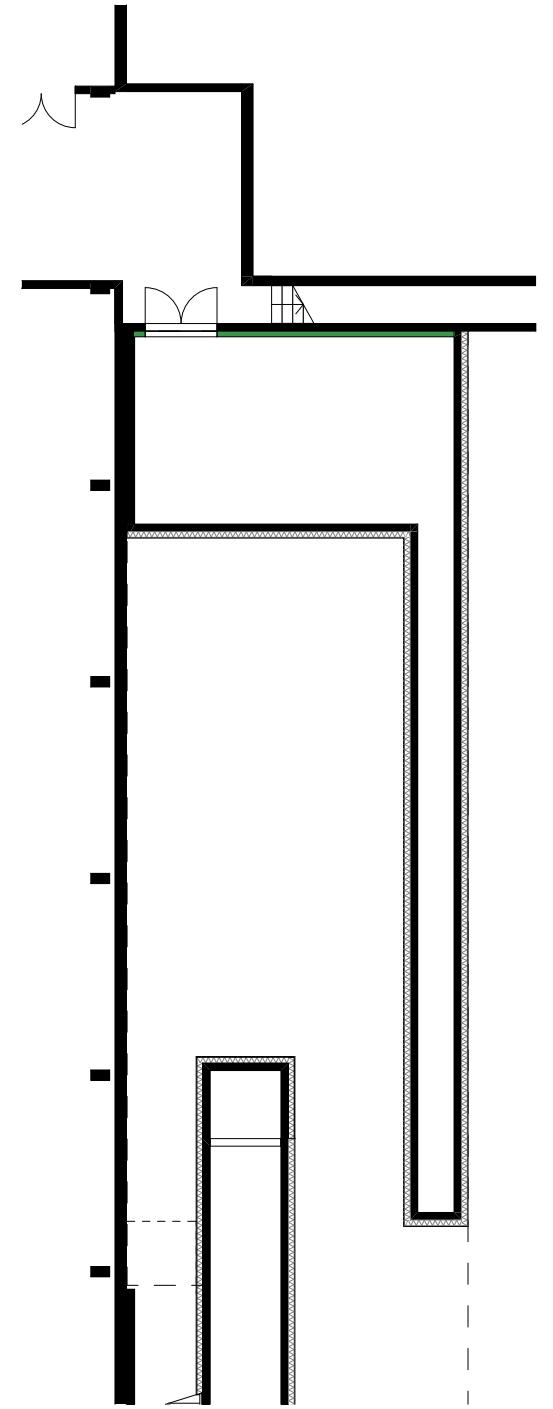
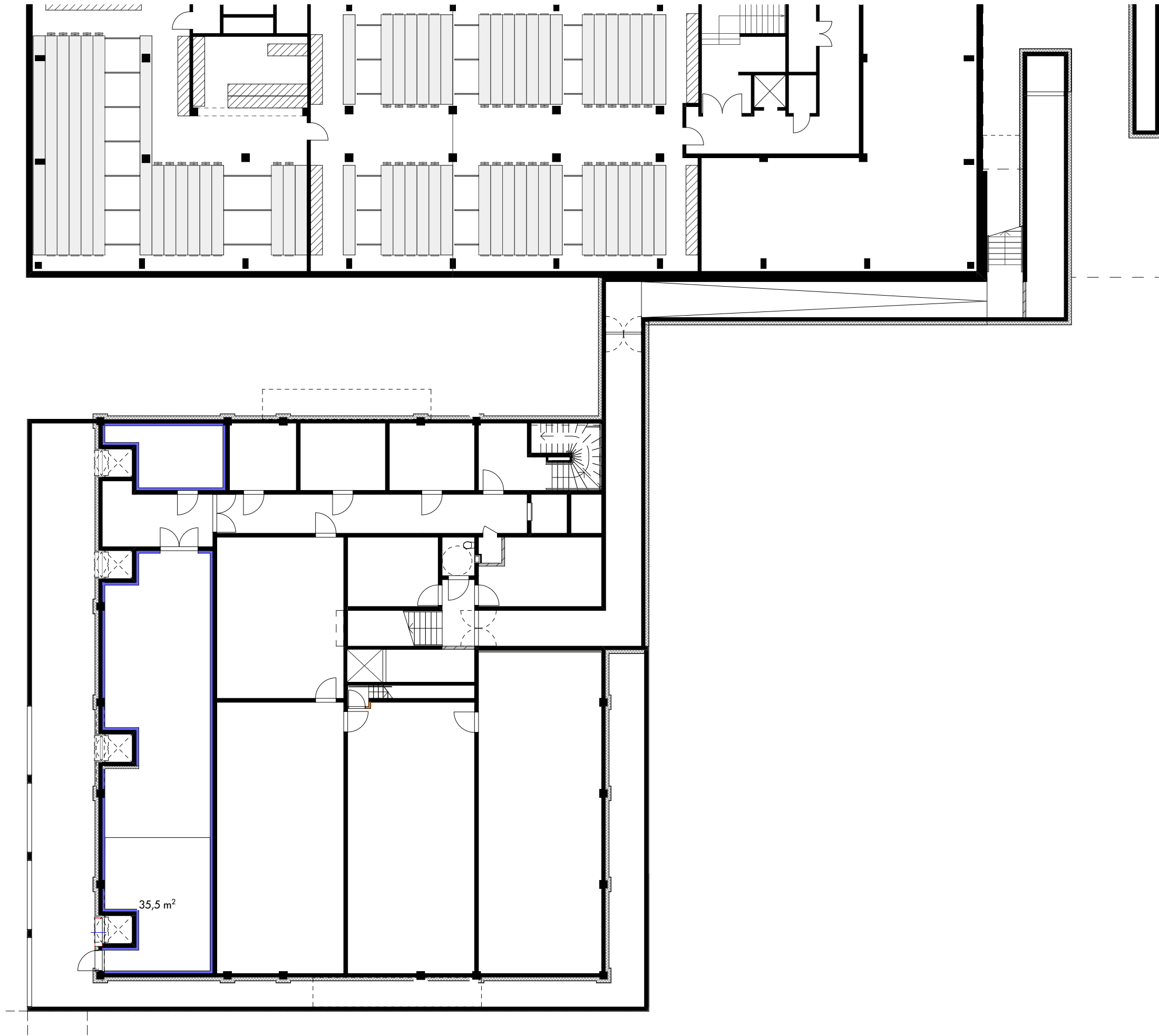
9 rue des Mazières | 91000 Evry-Courcouronnes

DCE

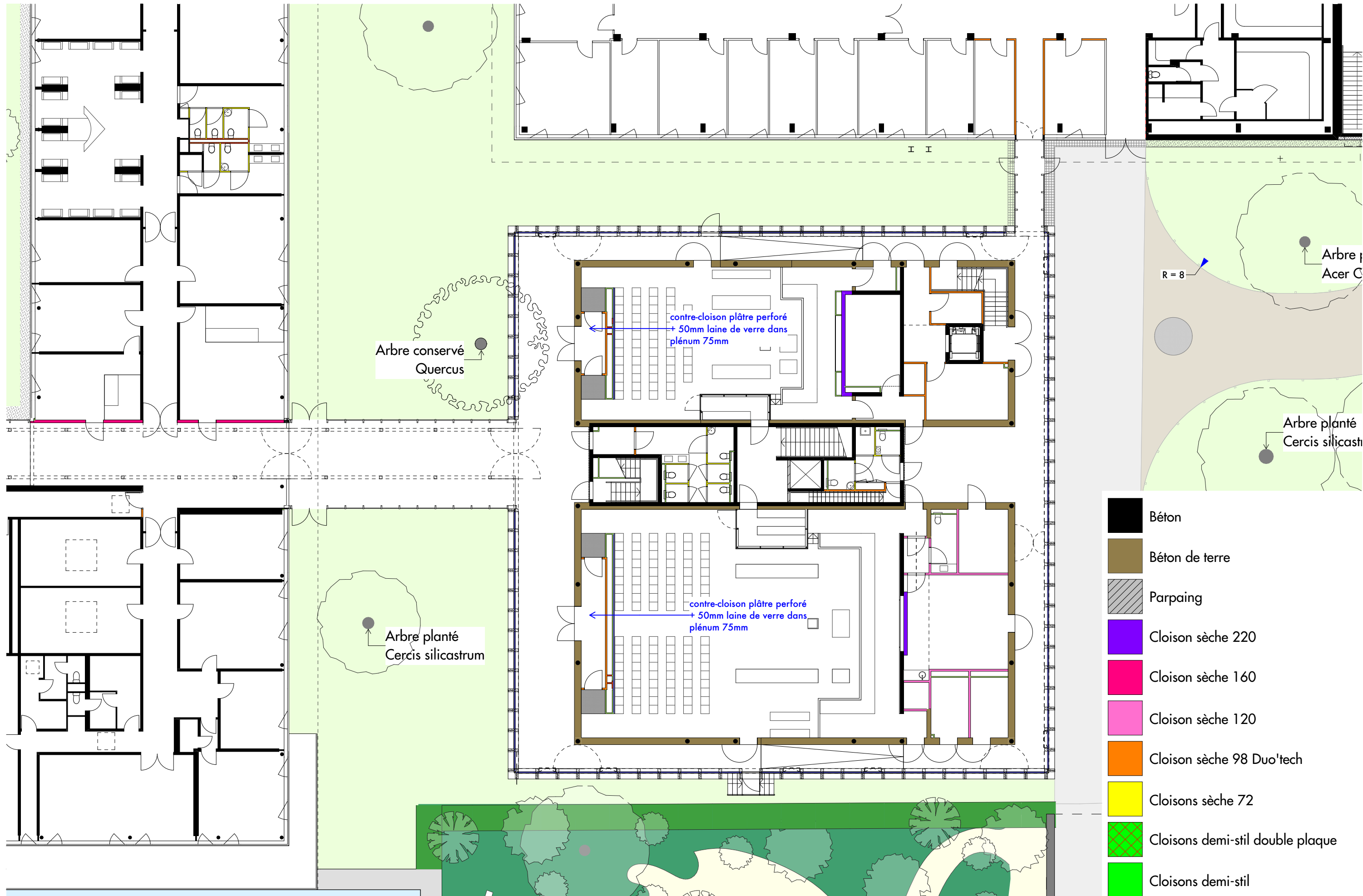
ARC  
FIN

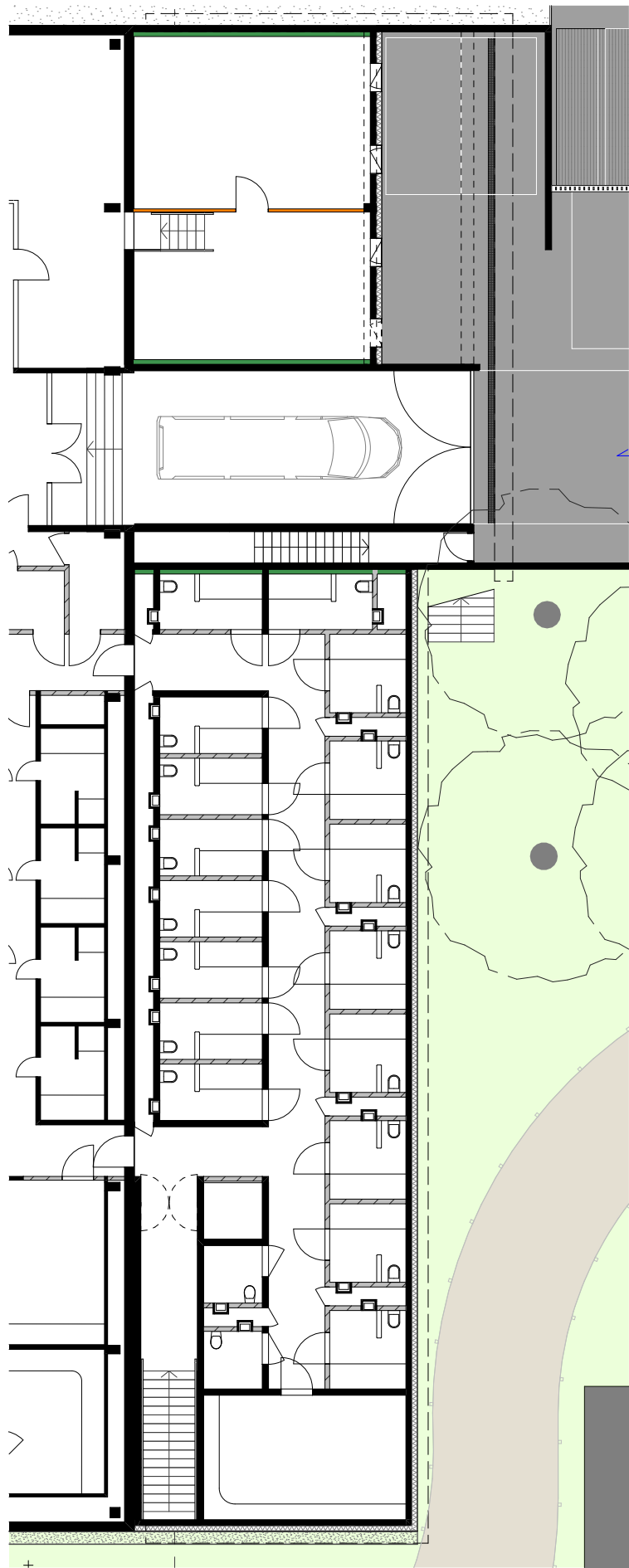
Repérage cloisonnement

Indice 4 juin 2025

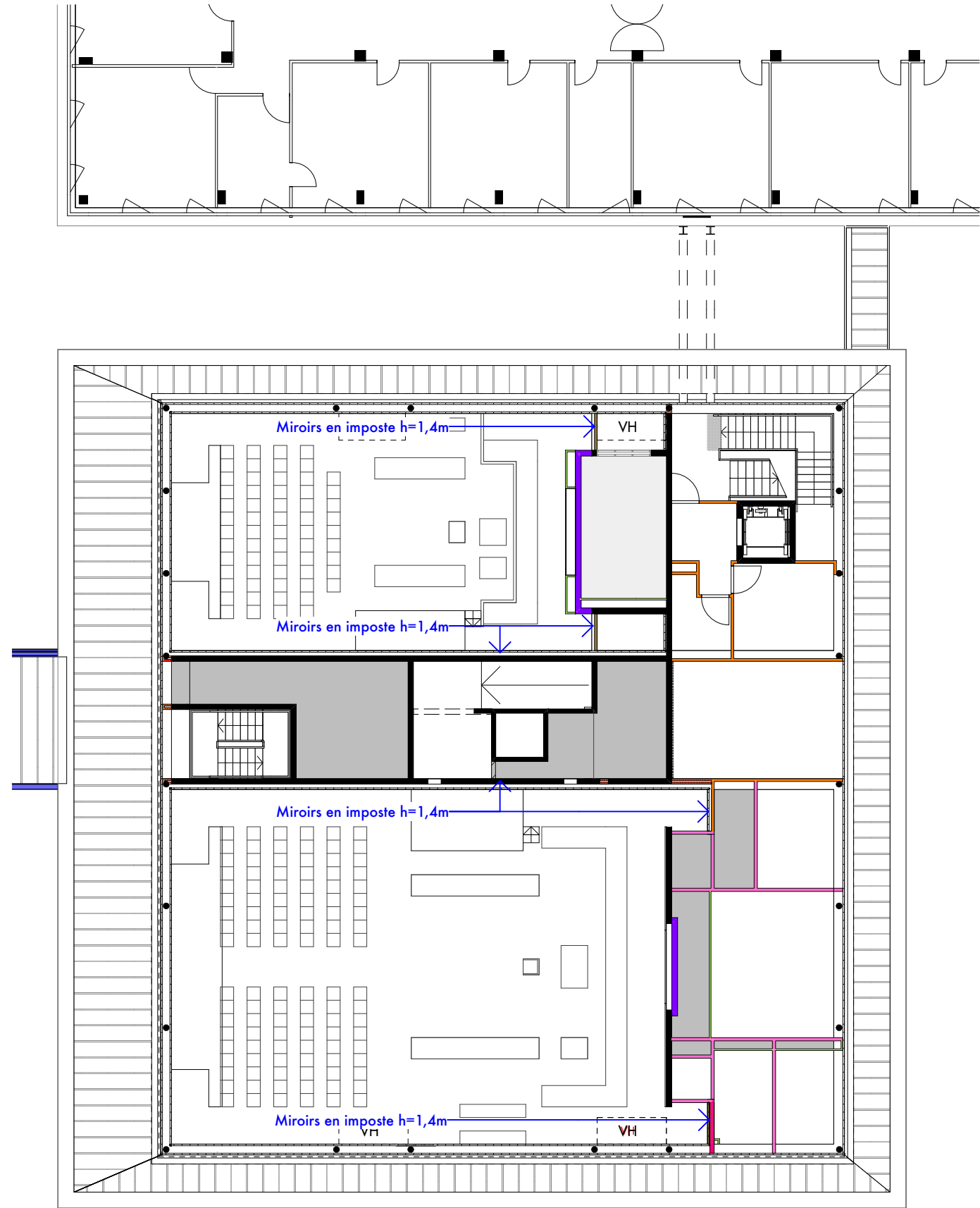


- Béton
- Parpaing
- Absorbant acoustique
- Cloison sèche 98





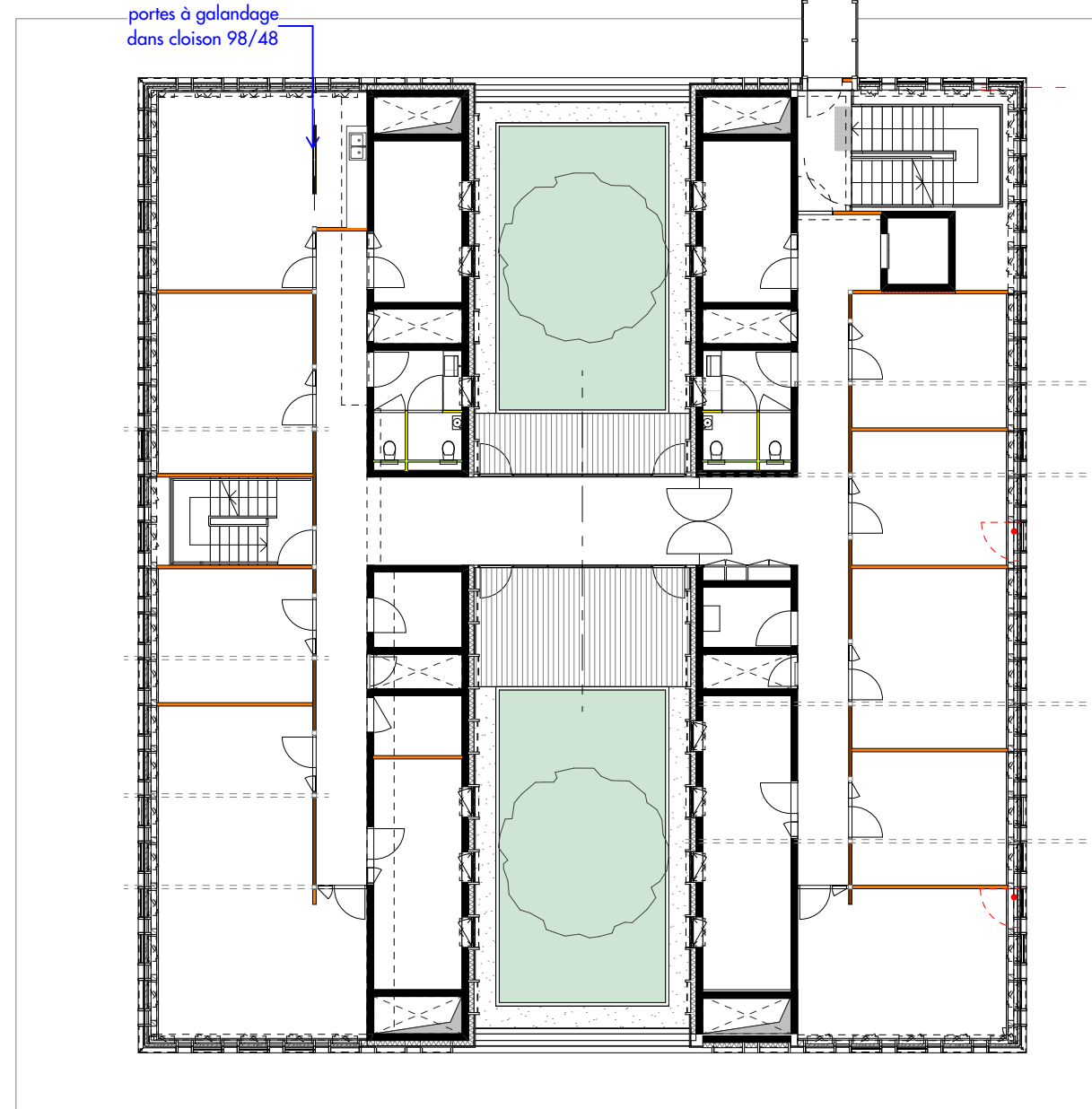
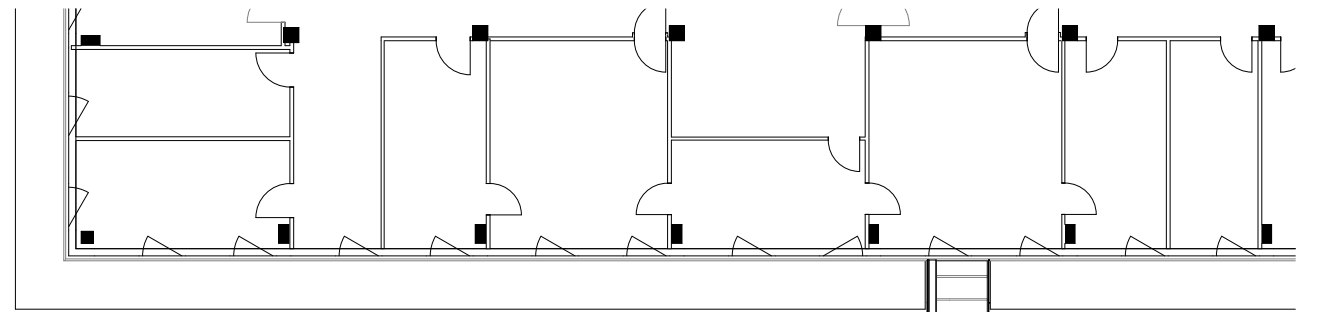
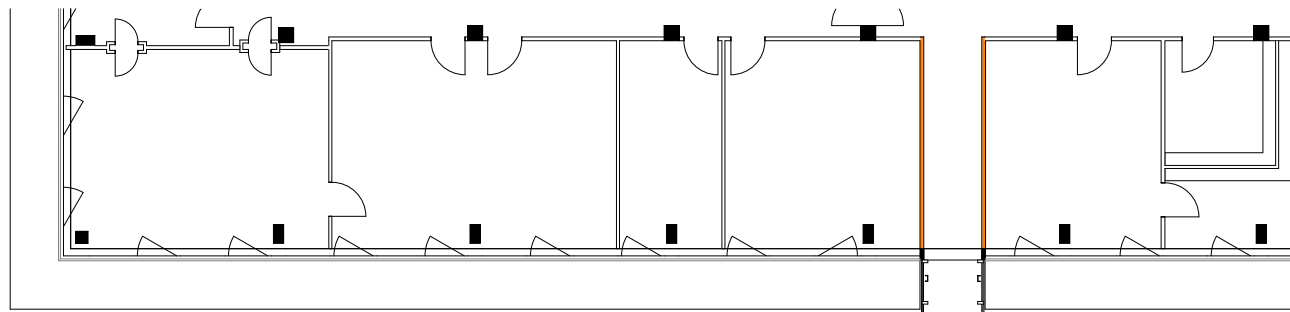
RDC - zone dépôt



R+1

-  Parpaing
-  Béton
-  Isolant thermique
-  Cloison sèche 220
-  Cloison sèche 160
-  Cloison sèche 120
-  Cloison sèche 98 Duo'tech
-  Cloisons sèche 72





R+2

R+3

- Béton
- Cloisons demi-stil
- Cloisons sèche 72
- Cloison sèche 98 Duo'tech